

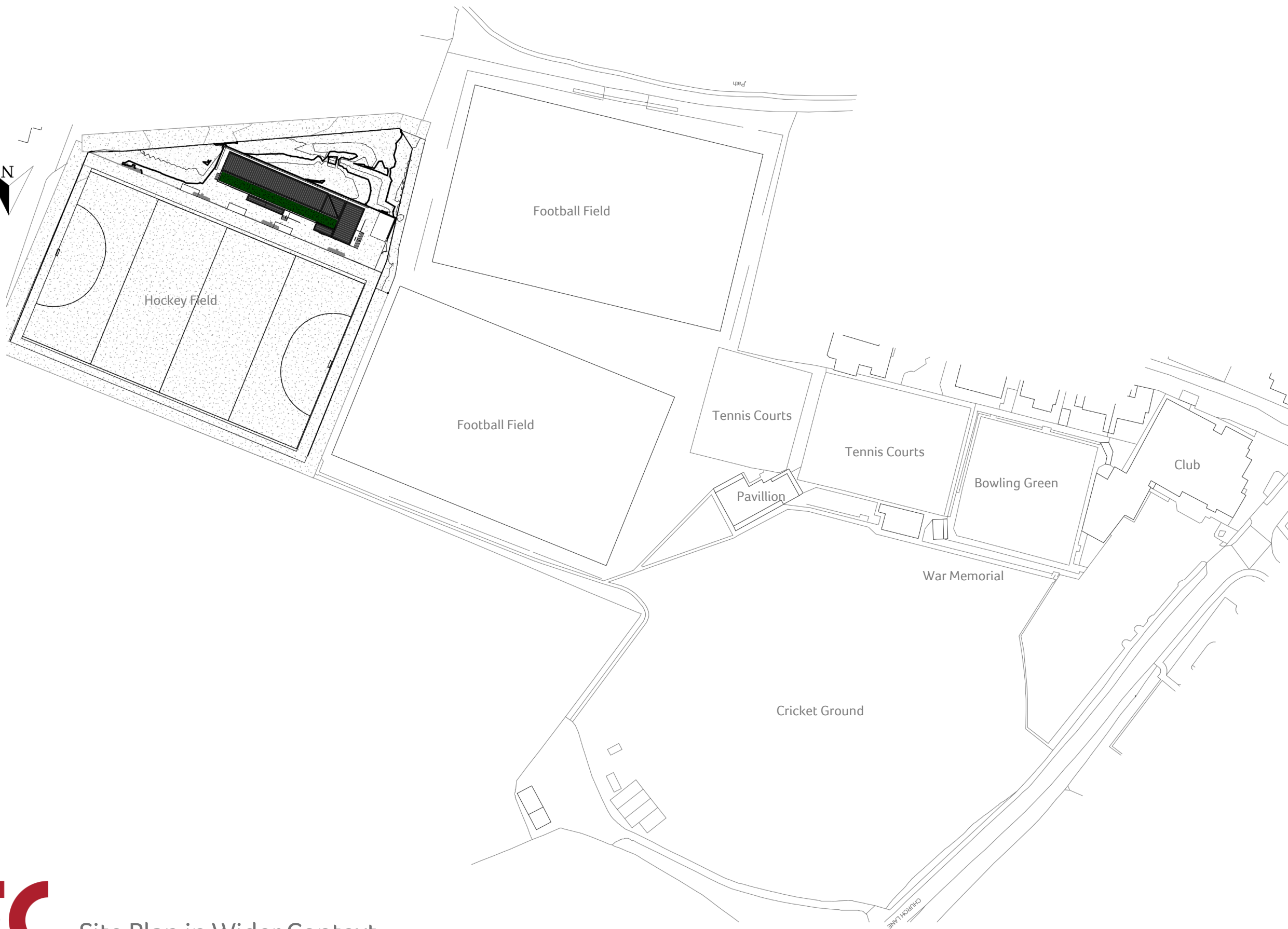


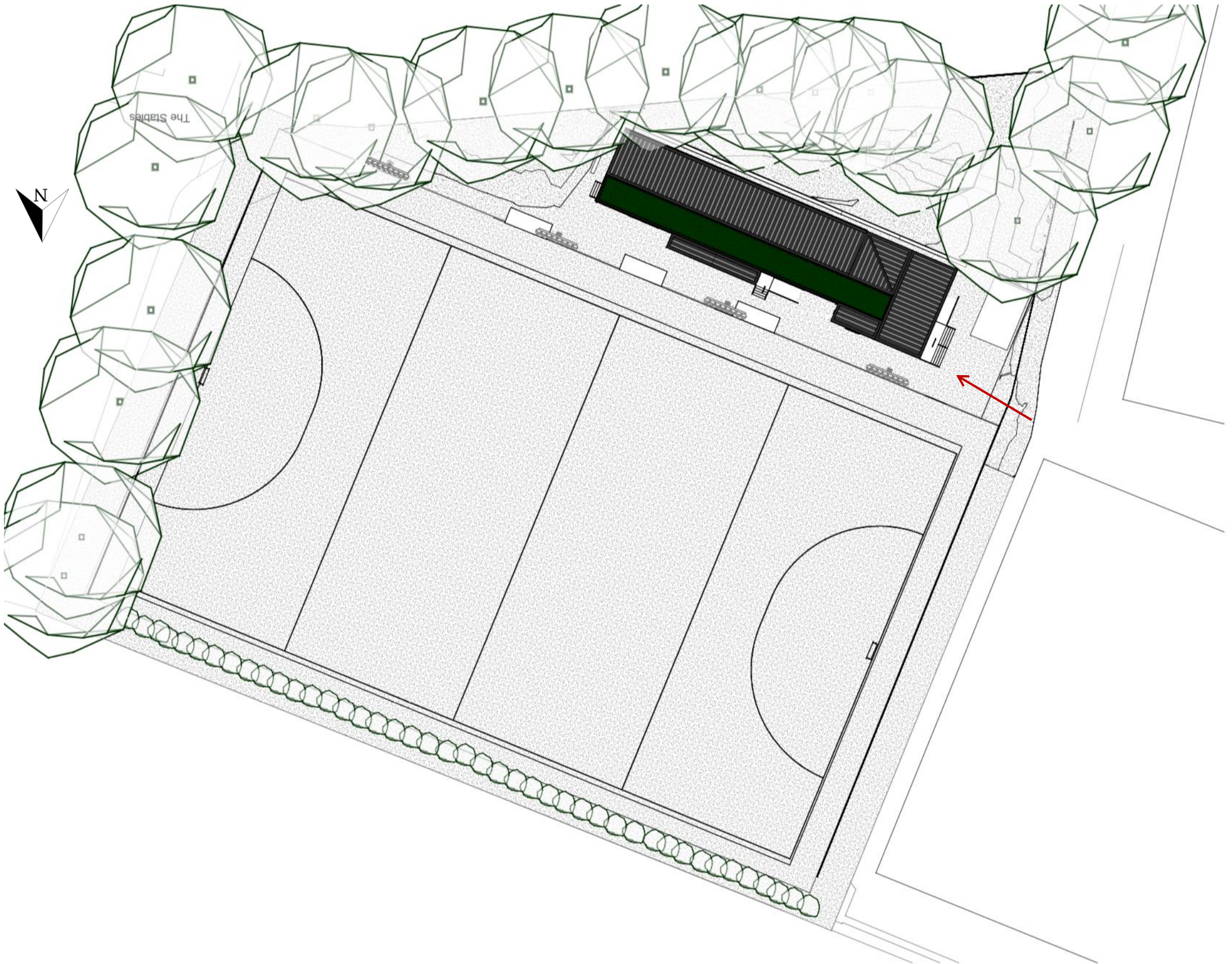
Leeds Adel
Hockey Club
Pavilion

FC Farrell & Clark
Architects

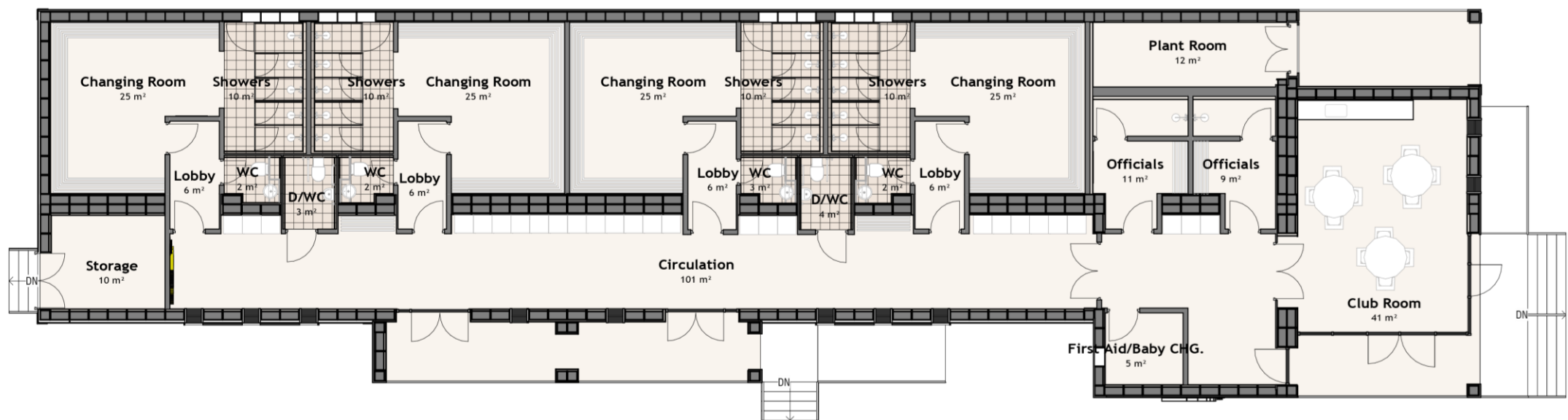
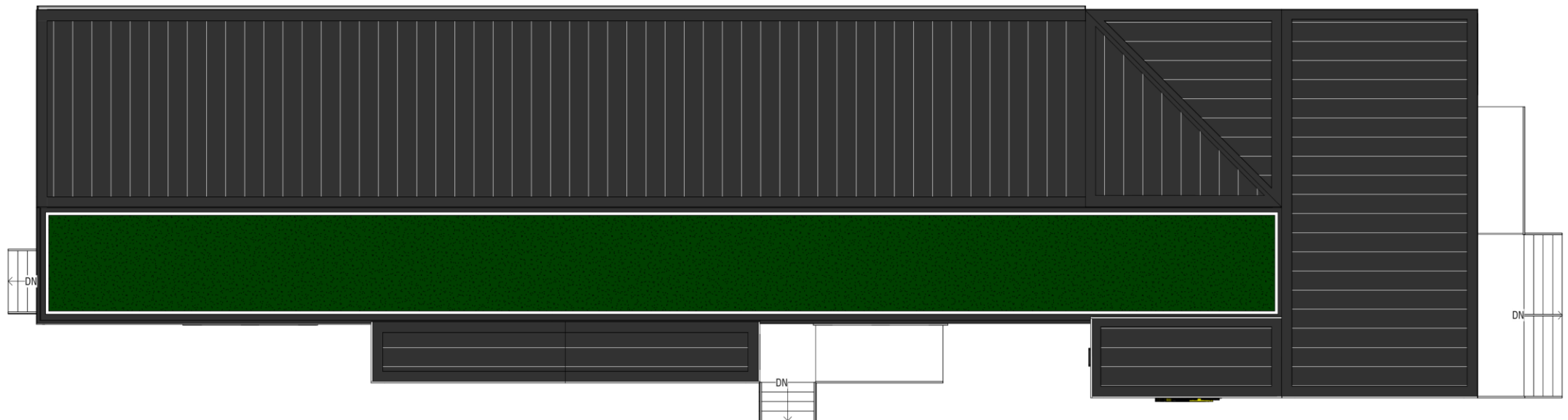
Third Floor,
Brodrick's Building,
43 - 51 Cookridge St,
Leeds, LS2 3AW

Leeds@farrellandclark.co.uk
London@farrellandclark.co.uk
www.farrellandclark.co.uk





Site Plan in Context



Site Plan, Ground Floor plan & Elevation



Third Floor,
Brodrick's Building,
43 - 51 Cookridge St,
Leeds, LS2 3AW

Leeds@farrellandclark.co.uk
London@farrellandclark.co.uk
www.farrellandclark.co.uk



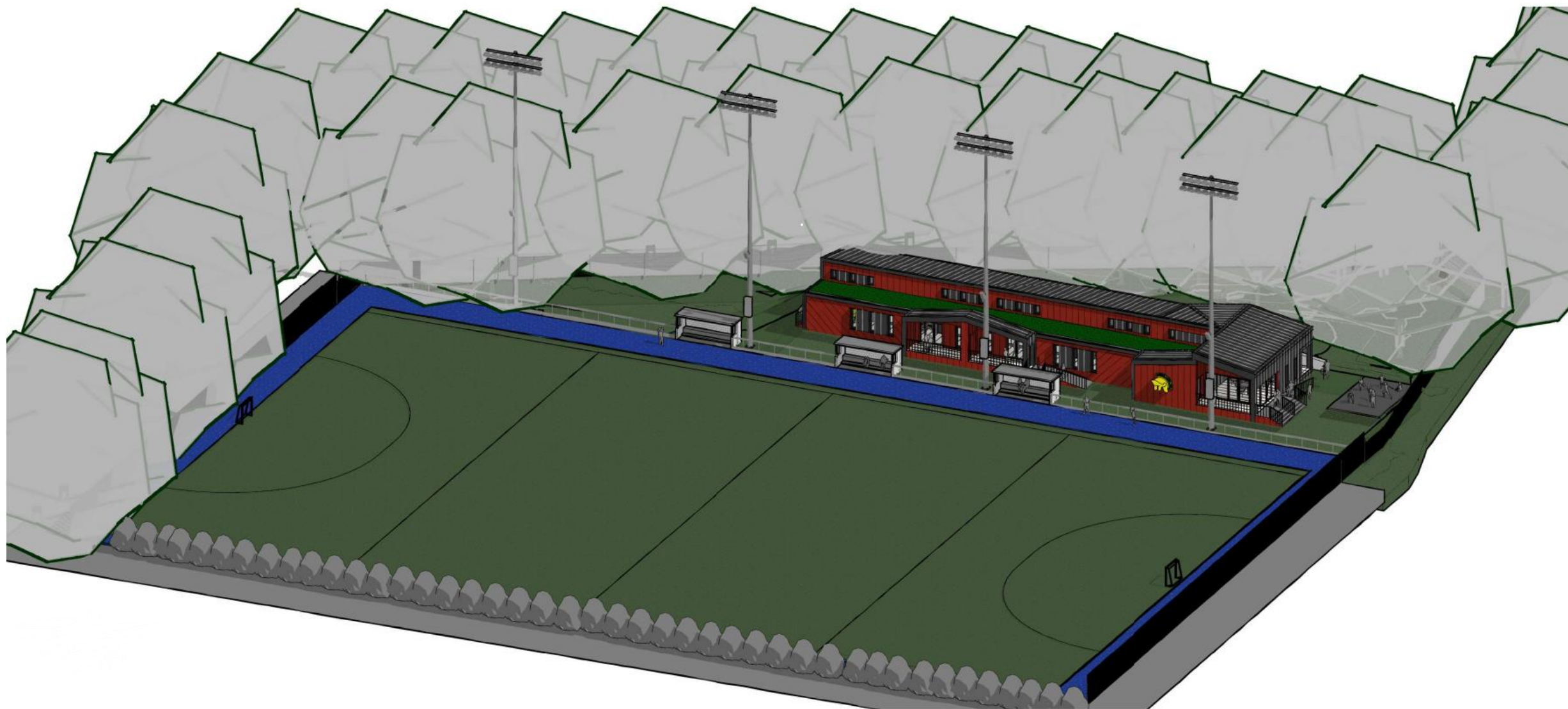
03 Elevation & 04 Elevation



3D View & Axonometric View

Third Floor,
Brodrick's Building,
43-51 Cookridge St,
Leeds, LS2 3AW

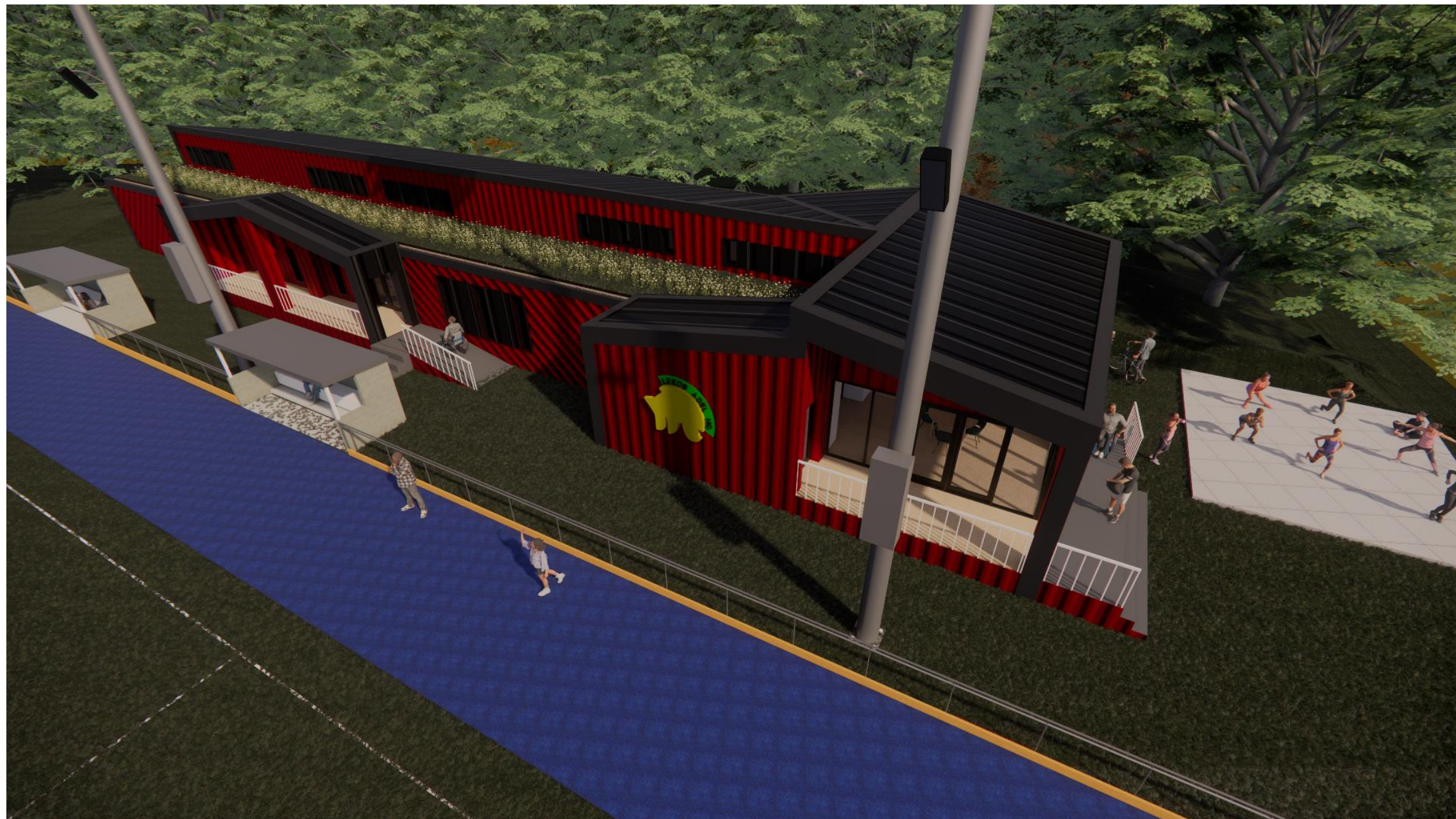
Leeds@farrellandclark.co.uk
London@farrellandclark.co.uk
www.farrellandclark.co.uk





Third Floor,
Brodrick's Building,
43-51 Cookridge St,
Leeds, LS2 3AW

Leeds@farrellandclark.co.uk
London@farrellandclark.co.uk
www.farrellandclark.co.uk



Third Floor,
Brodrick's Building,
43-51 Cookridge St,
Leeds, LS2 3AW

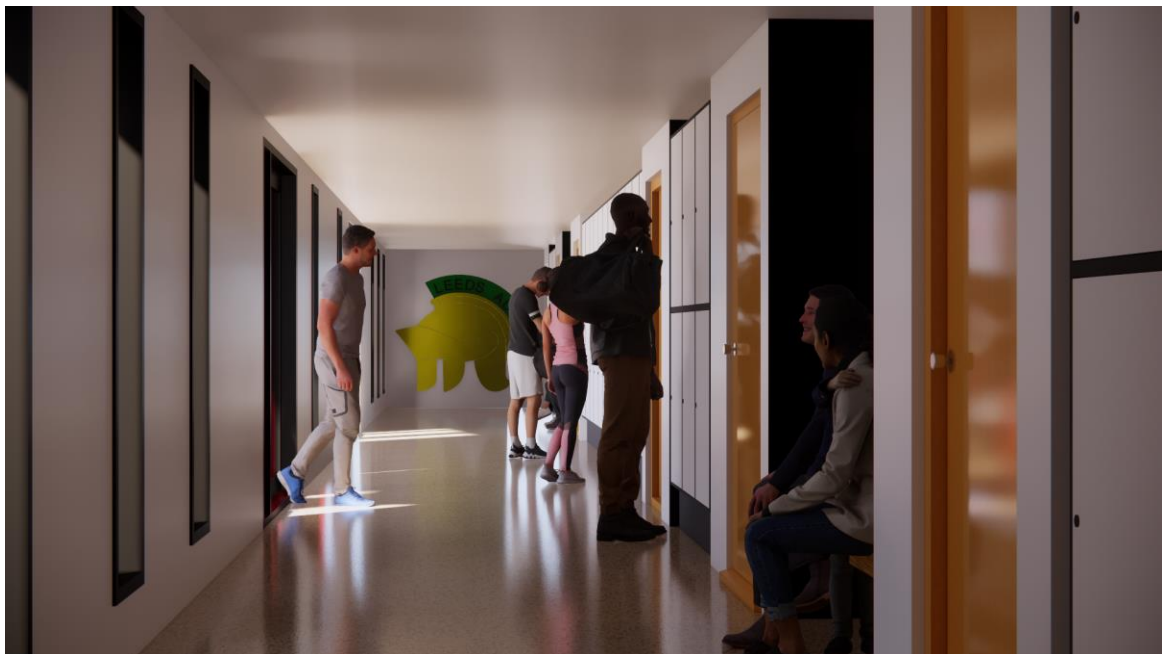
Leeds@farrellandclark.co.uk
London@farrellandclark.co.uk
www.farrellandclark.co.uk



Club Room View



Changing Room View



Corridor View



Entrance View

Third Floor,
Brodrick's Building,
43-51 Cookridge St,
Leeds, LS2 3AW

Leeds@farrellandclark.co.uk
London@farrellandclark.co.uk
www.farrellandclark.co.uk



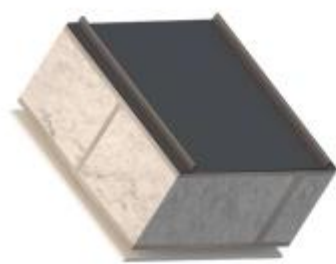
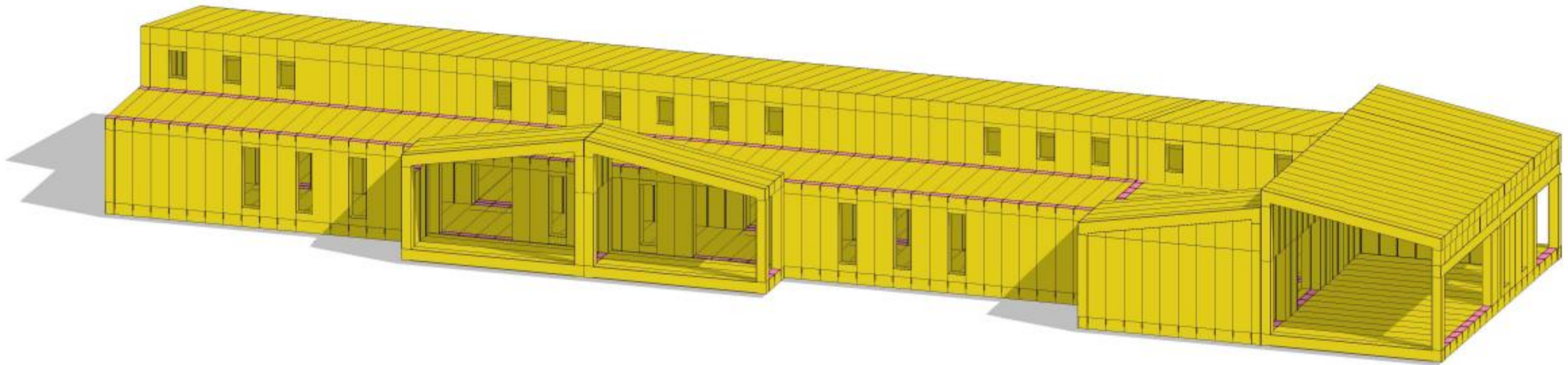
Third Floor,
Brodrick's Building,
43-51 Cookridge St,
Leeds, LS2 3AW

Leeds@farrellandclark.co.uk
London@farrellandclark.co.uk
www.farrellandclark.co.uk



Third Floor,
Brodrick's Building,
43-51 Cookridge St,
Leeds, LS2 3AW

Leeds@farrellandclark.co.uk
London@farrellandclark.co.uk
www.farrellandclark.co.uk



A range of roofing solutions can be considered, including tiles, corrugated panels, membrane systems, and green roofs. A particularly effective choice is standing-seam steel, valued for its robustness, sustainability through recyclability, and ease of installation.



One of the advantages of an 18mm plywood chassis of Wikihouse Skylark is its versatility, allowing for the secure attachment of virtually any type of cladding.



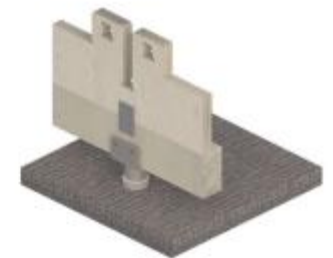
The precise, straight chassis allows for easy addition or removal of internal walls anywhere within the structure, offering flexibility to change the building's layout over time to suit various needs.



Wikihouse Skylark blocks include a cavity for 250mm insulation in the walls, and 350mm insulation in the roof, giving exceptional levels of thermal insulation.



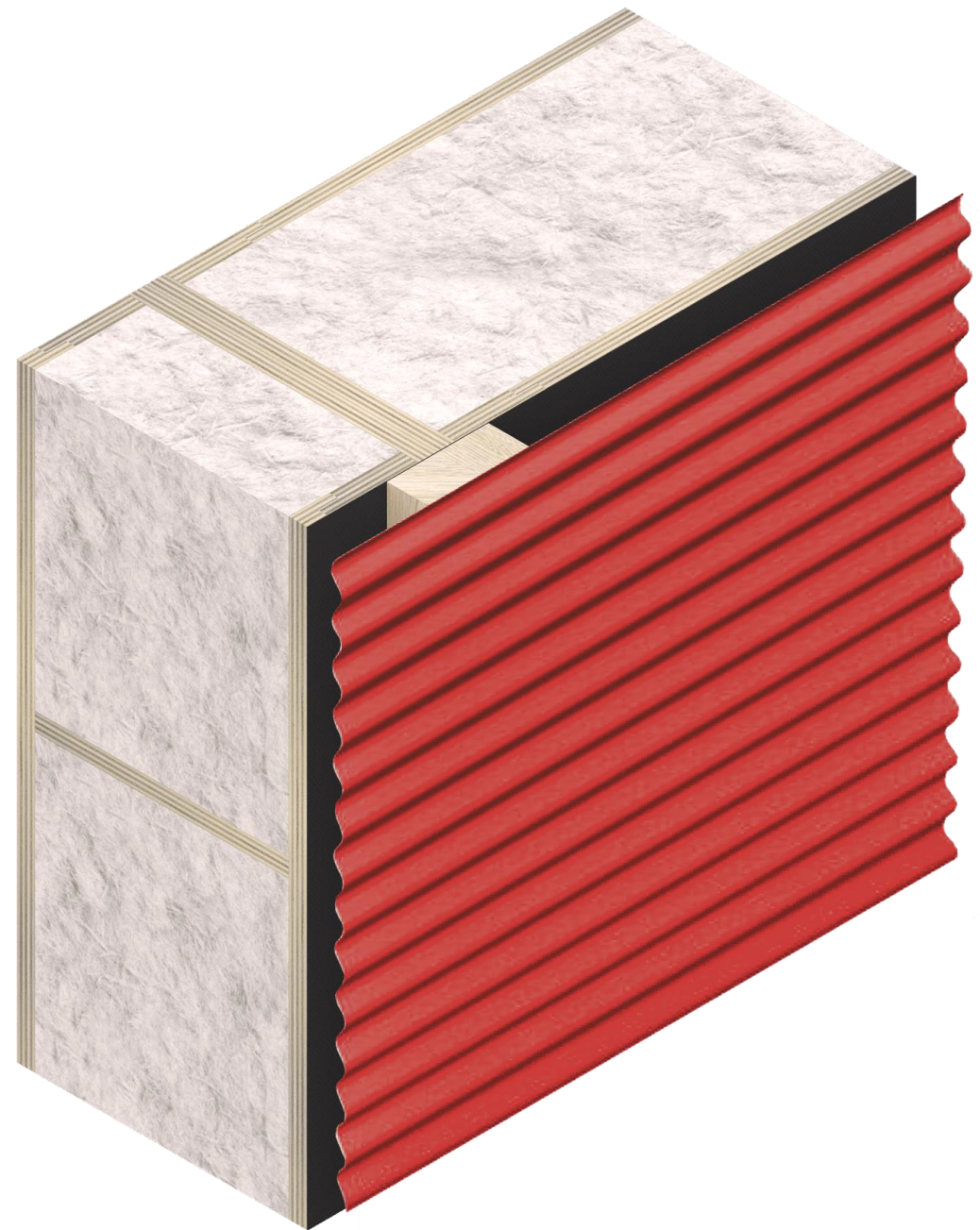
The Wikihouse chassis features a dedicated open zone around the entire structure for running pipes and electrical wiring. Additionally, the floor and roof blocks come with pre-cut openings designed to fit 100mm air ducts.



The Wikihouse system uses timber rails as a base for its structure, requiring them to be straight and level. These can be supported by various foundations, like reusable helical screw piles or concrete slabs. Because Wikihouse are lighter than brick buildings, the foundation must anchor the structure down as well as support it.



Euroclad Vieo external standing interlocking seam profile



Euroclad Sinusoidal coated sheet

Third Floor,
Brodrick's Building,
43 - 51 Cookridge St,
Leeds, LS2 3AW

Leeds@farrellandclark.co.uk
London@farrellandclark.co.uk
www.farrellandclark.co.uk

External Cladding



Third Floor,
Brodrick's Building,
43 -51 Cookridge St,
Leeds, LS2 3AW

Leeds@farrellandclark.co.uk
London@farrellandclark.co.uk
www.farrellandclark.co.uk